



# WASTE WORKERS AND COVID 19

Conceptualised by Pinky Chandran, Nalini Shekar and Rohini Malur

Illustration and Design by KimDesignz



# STAR CAST



Sampangi is a former bone collector and wastepicker. She now operates the Dry Waste Collection Centre at Kumaraswamy layout ward no-168.



Suresh is a resident of the ward Sampangi services through the DWCC. He mostly works from home but on occasion leaves home to go to the bank or on grocery runs.



HASIRUDALA SUPPORTS ME  
GIVING SCHOLARSHIP TO

DRY WASTE COLLECTION  
CENTRE

Meet Sampangi,  
the DWCC operator.

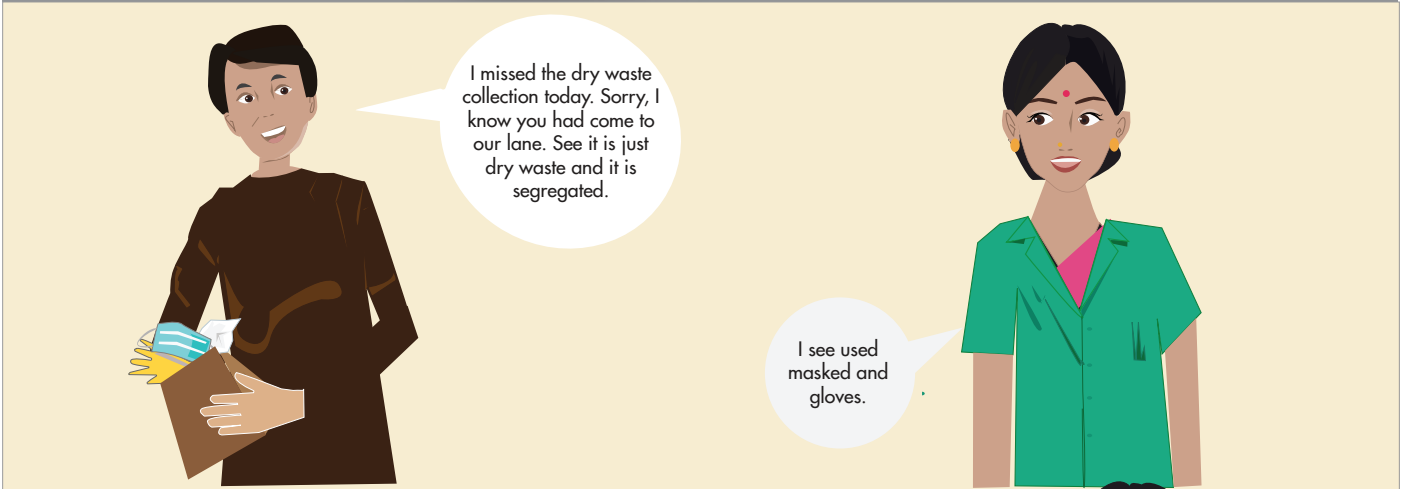
B.B.M.P

KA 05  
XX 0990





Stop, Why are you dumping waste on the street? Which street are you from? I just picked up waste from the two streets behind.



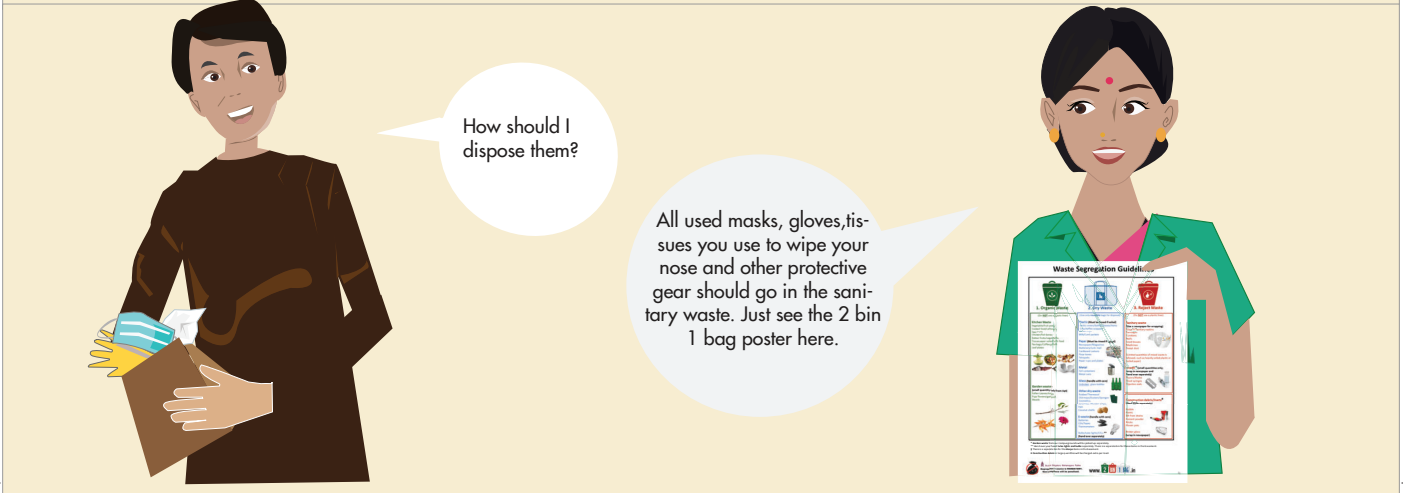
I missed the dry waste collection today. Sorry, I know you had come to our lane. See it is just dry waste and it is segregated.

I see used masked and gloves.



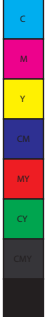
Yes, this is dry waste right? There is no food or organic items.

I am sure you are aware of the Corona Virus that is why you are using gloves and masks. But what about us? You can work from home, we can't. Please dispose them properly so that we are safe too.



How should I dispose them?

All used masks, gloves, tissues you use to wipe your nose and other protective gear should go in the sanitary waste. Just see the 2 bin 1 bag poster here.



## On behalf of all waste workers, my appeal to all citizens

Compulsorily segregate waste as per the 2Bin1 Bag method.

Make sure that all dry waste is rinsed and dried. Store coconuts separately for pick up.

All used PPE - used tissues, gloves, masks - must be disposed as sanitary waste; double-wrapped in a newspaper with an X mark clearly visible.

If waste pick-up does not arrive or is delayed, ensure that waste is stored and not left at the door steps or dumped on the streets.

If handing over your dry waste to a wastepicker or scrap dealer, ensure that no PPE or sanitary waste is mixed.

If any of us ask for drinking water, please do share.

We may need water to wash our hands, so kindly oblige.

Do consider donating PPE - gloves and masks.

